

(Abst G. p. 134)

(72B)

$\frac{34}{516}$ Sept 22-190 James R. McFarland to C.P. Ry. Co. a strip of land surveyed as a right of way for Central Pacific RR. Co. 3 acres

$\frac{34}{570}$ Along Knight to C.P. Ry. Co. \$80. a strip of land 4.06 ac in N.W. 1/4 Sec. 19, T. 6 N - R. 2. W, Bq. at sta 1015+24 of surveyed line where same intersects the W. bdy Sec. 19, T. 6 N - R. 2. W. Thence Easterly through said land a dist of 1264. ft m. & l. to W. bank of Weber River to Sta L 1030+00. embracing strips 140. ft wide 70. ft on each side of said center line

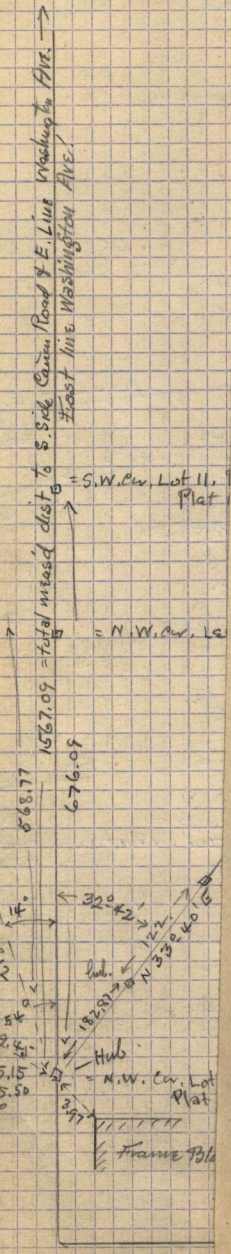
$\frac{34}{574}$ James P. Gibson to C.P. Ry. a strip 1.03 in N.W. 1/4 Sec. 19, T. 6 N. W.

$\frac{40}{598}$ James R. McFarland to C.P. R.R. a strip of land .77 a in N.W. 1/4 Sec. 19, T. 6 N - R. 2. W

$\frac{42}{35}$ Jos. P. Gibson to Southern Pac. Co. a strip of land for Rtg W. for C. P. Ry. through said parties long in N.W. 1/4 19.

$\frac{41}{572}$ Jos. P. Gibson to Cynthia Heslipo - Bq. S.E. cor. N.W. 1/4 19. N 10 R. W 30 R. S 10 R. E 30 R. to C.P.

$\frac{45}{488}$ Alanzo Knight to Chas A. Tracy. Pt. S.W. 1/4 18, T. 6 N - R. 2. W. Bq. at S.W. cor. N 1/2 of sd 1/4 Sec. E. to W. line Co. Road. N by along. old road to W line of 1/4 - S. along old line to C.P.



center 20 ft x Was